

# GLOBAL INDIAN INTERNATIONAL SCHOOL, TOKYO





## TABLE OF CONTENTS

---

03

Vision & Mission

04

Our Global Presence – GSG

05

Our Journey in Japan  
Campus Network and  
Accessibility

06

Our Tokyo Campuses

07

Curricula at GIIS Tokyo

08

Accreditations

09

Global Montessori Plus  
(GMP)

10

International Curriculum  
(IBPYP, CLSP, IGCSE, IBDP)

14

Indian Curriculum (CBSE)

16

How GIIS Tokyo Enhances  
Academic Success for Every  
Student

18

The 9GEMS™ Framework

19

Extra-Curricular and  
Co-Curricular Activities

20

Value-Added Programmes

23

University Fair & Career  
Counselling

24

Key Contacts

# VISION & MISSION



## Laying the foundation for NEXT GEN Learning

**Global Indian International School (GIIS)** is a pioneer in new-age K-12 education and part of the **Global Schools Group**—a network of 64 campuses across 11 countries. We offer a world-class learning experience thoughtfully designed to prepare students for the future.



### VISION

Our vision is to become a global role model for teaching and learning.



### MISSION

The world we live in is shrinking in size, expanding in possibilities and evolving at a blurring pace. Living and thriving in such a dynamic global landscape requires an environment and education that's free of barriers.

That's why, at the Global Schools, we provide a learning experience that extends beyond the horizon, where learning is Limitless.

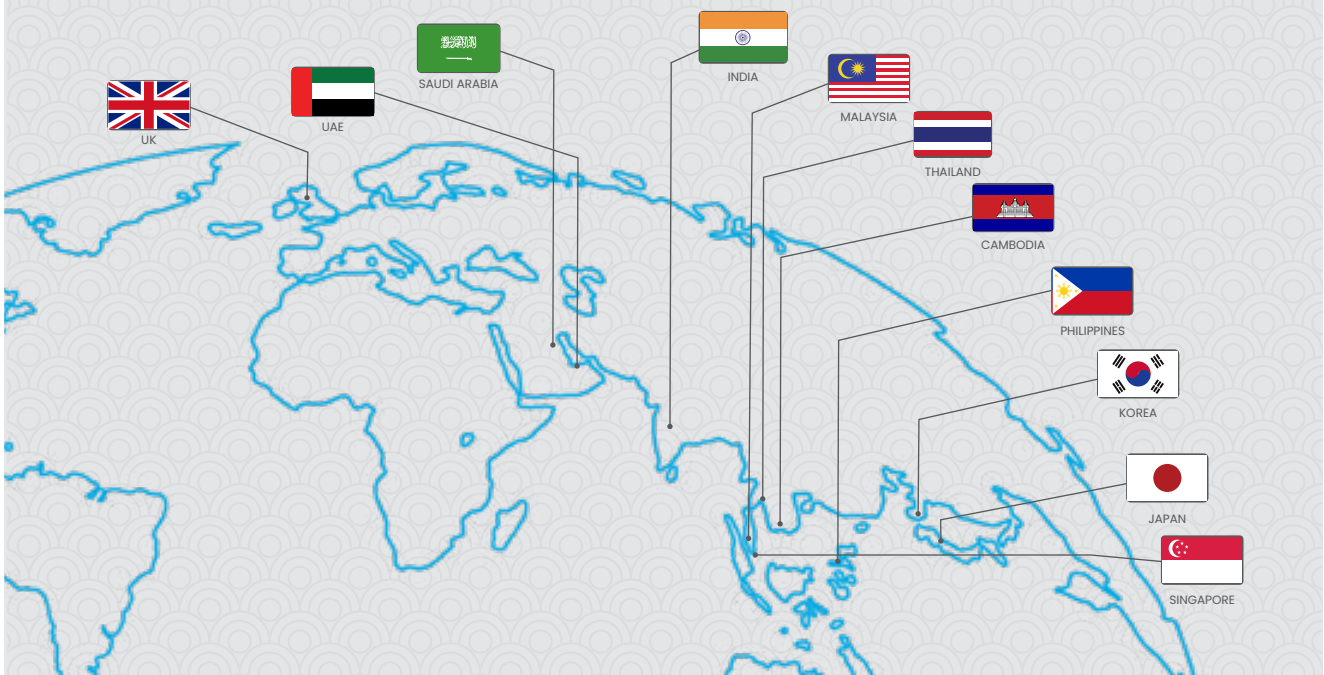
# OUR GLOBAL PRESENCE - GSG

The Global Schools Group comprises 12 leading international schools with 64 campuses across 11 countries.



## A Widespread Interconnected Network

Today, our network spreads across continents to provide a world-class learning experience to students from all over the world.



**INTERNATIONAL PRESENCE**  
In 11 Countries



**GLOBAL STUDENT BODY**  
Over 45,000 Students  
from 70 Countries



**PORTFOLIO**  
12 School  
Brands



**10+ MULTIPLE CURRICULA**  
10+ Internationally  
Recognised Curricula



**WELL-QUALIFIED FACULTY**  
5000+ Educators  
from 49 Countries



**NUMEROUS LOCATIONS**  
64 Campuses

# OUR JOURNEY IN JAPAN

Global Indian International School (GIIS) Tokyo is a leading K-12 international school, offering globally recognized curricula, including the International Baccalaureate (IB), Cambridge, and CBSE, along with GMP (Global Montessori Plus)—an in-house developed, award-winning curriculum for preschoolers.

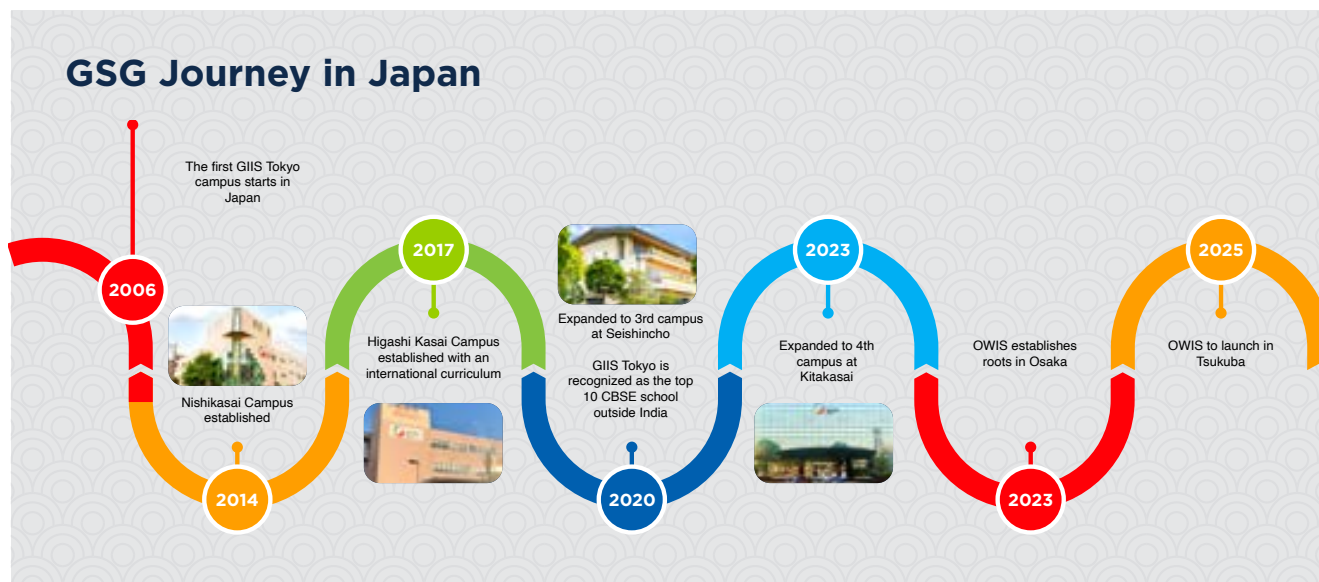
Accredited by Japan's Ministry of Education (MEXT), GIIS is renowned for its STEM-focused education, innovative learning frameworks, and strong English language support, equipping students with essential 21st-century skills for a global future. Recognised as Tokyo's top-ranked CBSE international school and among the top 10 CBSE schools globally, GIIS excels in academic and holistic development across all curricula. Its award-winning 9GEMS framework nurtures leadership, innovation, and cultural awareness, preparing students for success in an interconnected world.

With 20+ years of experience across 11 countries, GIIS blends Indian ethos with modern education, creating a dynamic, globally focused learning environment—the ideal choice for parents seeking world-class international education.



## CAMPUS NETWORK AND ACCESSIBILITY

GIIS Tokyo and One World International School (OWIS) Osaka & Tsukuba are premier institutions delivering world-class education in Japan. GIIS Tokyo offers a dynamic learning environment with globally recognised curricula, while OWIS Osaka specialises in international education, furthering Global Schools Group's (GSG) commitment to academic excellence.



# OUR TOKYO CAMPUSES



Located in Edogawa-ku, Tokyo, GIIS operates four purpose-built campuses, each offering specialised programmes tailored to meet the diverse needs of our students and families. With state-of-the-art digital classrooms, well-equipped labs, modern infrastructure, and extensive learning resources, we provide an exceptional educational experience

that fosters academic excellence and holistic development.

Our team of dedicated and experienced educators ensures that every child receives individualised attention in a safe, inclusive, and stimulating environment, enabling them to flourish and reach their full potential.



## Nishikasai

8-3-13 Nishikasai,  
Edogawa-ku, Tokyo  
134-0088  
Phone: 03-6631-0441

**CBSE**  
Grade 4 - 12

The centre for our renowned CBSE curriculum, aligned with NCERT guidelines and India's New Education Policy (NEP), focusing on strong academic foundations, innovation, and overall student development.



## Higashikasai

9-3-6 Higashikasai,  
Edogawa-ku, Tokyo  
134-0084  
Phone: 03-6631-0441

**IB PYP** (Grade 3 - 5)  
**Cambridge**  
(Grade 6 - 10)  
**IB DP** (Grade 11 & 12)

A hub for international curricula, offering the IB Primary Years Programme (Grades 3-5), Cambridge Lower Secondary (Grades 6-8), IGCSE (Grades 9-10), and the IB Diploma Programme, designed to nurture critical thinking, leadership, and a global mindset.



## Seishincho

2-10-1 Seishincho,  
Edogawa-ku, Tokyo  
134-0087  
Phone: 03-6631-0441

**Nursery, K1 & K2**

A dedicated preschool campus following the Global Montessori Plus (GMP) curriculum, which integrates experiential learning, creativity, leadership, and social-emotional growth in a caring and supportive setting. Parents play an essential role in this early learning journey.



## Kitakasai

2-10-20 Kitakasai,  
Edogawa-ku, Tokyo  
134-0081  
Phone: 03-6631-0441

**GMP**  
(Nursery, K1, K2 & K3)  
**IBPYP** (Grade 1 & 2)  
**CBSE** (Grade 1 - 3)

Catering to young learners aged 3-8, this campus offers Global Montessori Plus (GMP) for preschoolers, IB Primary Years Programme (IB PYP) for Grades 1-2, and CBSE for Grades 1-3. With small class sizes, experienced faculty, and modern facilities, it provides a nurturing and inclusive environment that fosters holistic development. Conveniently located near Nishi Kasai and Funabori stations, the campus ensures a strong educational foundation for early learners.

For seamless accessibility, shuttle services from nearby subway stations connect all campuses, ensuring convenient and hassle-free transportation for students and families.

At GIIS Tokyo, our campuses go beyond traditional schooling—they provide a holistic learning environment where students excel academically, socially, and emotionally, preparing them to become confident global leaders.



## CURRICULA AT GIIS TOKYO

At GIIS Tokyo, we foster a supportive and inclusive environment, enabling every child to reach their full potential. Our international curriculum blends academic excellence with personal growth, equipping students with the skills and values needed to thrive in a globalised world.



Recognising each child's unique strengths and aspirations, we offer a diverse range of curricula tailored to different learning styles and goals. Whether starting their education or advancing to the next stage, our programmes provide a strong, adaptable foundation for future success.

The following sections outline our curricula, reflecting our commitment to high-quality education, curiosity, and lifelong learning.

# ACCREDITATIONS



**MEXT** MINISTRY OF EDUCATION,  
CULTURE, SPORTS,  
SCIENCE AND TECHNOLOGY-JAPAN

Accredited to Ministry of Education, Culture, Sports, Science and Technology, Japan (MEXT)

01

02

03

04



**ib** Diploma Programme



**ib** Primary Years Programme

Affiliated to International Baccalaureate Organization (PYP 1-5, & IBDP)



**Cambridge Assessment International Education**

**Cambridge International School**

Affiliated to Cambridge Assessment International Education (Grade 6-10)



Affiliated to Central Board of Secondary Education (CBSE), Education Department, Union Government of India



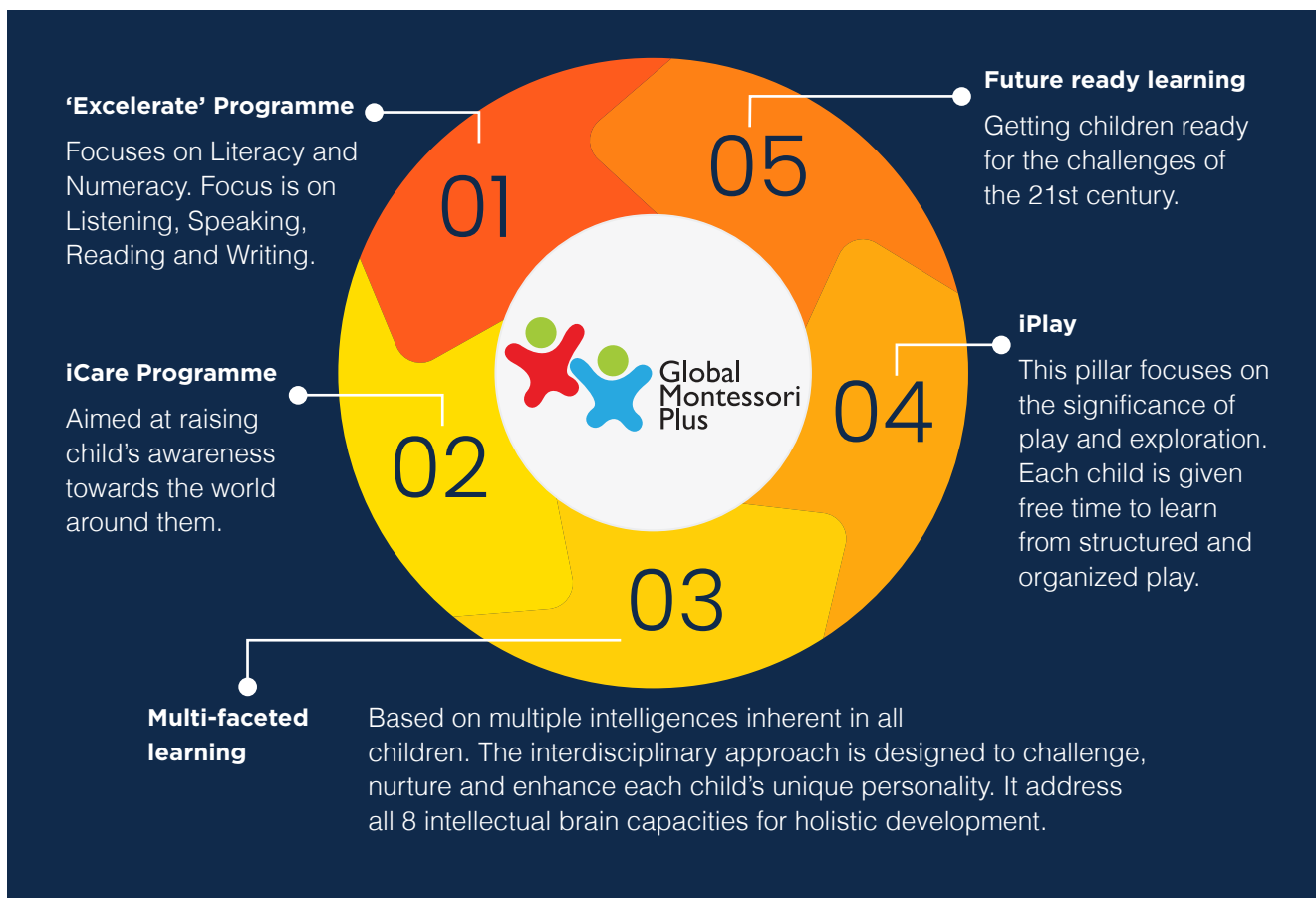
# Global Montessori Plus (GMP) - Grades Nursery, K1 & K2



Our Global Montessori Plus (GMP) programme is an in-house developed, award-winning curriculum designed for preschool-aged children. It blends the time-tested principles of Montessori education with modern, innovative practices, ensuring a holistic foundation for early learners. This curriculum focuses on developing core skills such as language, numeracy, social interactions, and sensory awareness through experiential and inquiry-based learning.

GMP provides a nurturing and stimulating environment where young learners can explore their creativity, build independence, and cultivate a lifelong love for learning from an early age. With a unique approach that integrates global best practices and child-centric methodologies, GMP sets the stage for well-rounded development and future academic success.

Rooted in below five key pillars, our programme enhances cognitive, motor, and social development, equipping young learners with essential skills for future success.



## GMP Curriculum Overview at GIIS Tokyo

	Stage	Age Group	Curriculum	Assessment Criteria	Faculty	Key Activities
1	Pre-Primary Years	Ages 3-6	Global Montessori Plus (GMP)	Continuous observation, hands-on practical learning	Montessori-trained educators	Sensory exploration, creativity, fine/gross motor development, phonics, numeracy, cultural exposure

# INTERNATIONAL CURRICULUM

GIIS Tokyo offers a comprehensive range of international curricula to cater to students at different stages of their educational journey, ensuring a seamless pathway for global success.



## IB Primary Years Programme (PYP) - Grades 1 to 5

At GIIS Tokyo, we take pride in being a recognised IB PYP school, offering a world-class inquiry-based curriculum that nurtures young minds. Designed for students aged 5-12 years (Grades 1-5), the IB PYP follows a transdisciplinary, student-centred learning approach, encouraging curiosity, critical thinking, and conceptual understanding. Our dedicated, IB-trained faculty ensures that students take ownership of their education, developing essential skills that extend beyond academics to prepare them for real-world challenges.

The IB PYP curriculum at GIIS Tokyo is designed to foster holistic development, empowering students to become active, caring participants in their lifelong learning journey. Covering six subject areas—language, social studies, mathematics, arts, science, and personal/social/physical education—the curriculum integrates specialist-led sessions in language, culture, art, music, and physical education. Through this dynamic learning environment, students at our Kita Kasai and Higashi Kasai campuses benefit from high-quality teaching methodologies, inspiring them to engage, explore, and excel in a rapidly evolving world.



# CAMBRIDGE CURRICULUM

---

At GIIS Tokyo, we offer the Cambridge Curriculum, a globally recognised educational framework that equips students with critical thinking, problem-solving, and analytical skills. Our Cambridge Lower Secondary Programme (CLSP) and International General Certificate of Secondary Education (IGCSE) provide a structured academic pathway that prepares students for higher education and future success.

## Cambridge Lower Secondary Programme (CLSP) – Grades 6 to 8

The CLSP, available at our Higashi Kasai Campus, is designed for students aged 11-14 years and forms part of Cambridge Key Stage 3. This programme builds a strong foundation in English, Mathematics, and Science, refining students' knowledge, application, and conceptual understanding. CLSP fosters an inquiry-based learning approach, encouraging students to engage in real-world applications, enhance critical thinking, and develop problem-solving skills essential for further studies like IGCSE and IB Diploma Programme (IBDP).

The curriculum follows Cambridge's internationally benchmarked standards, ensuring a progressive skill-building process.



## Cambridge IGCSE - Grades 9 and 10

The IGCSE, offered to students in Grades 9 and 10, is an internationally recognised qualification that delivers a balanced and rigorous academic experience. The curriculum comprises core subjects like English, Mathematics, and Science, along with a broad selection of elective subjects, allowing students to tailor their studies based on personal interests and career aspirations.

The curriculum nurtures independent research, analytical reasoning, and communication skills, equipping students with the tools necessary for higher education and global academic opportunities.

At GIIS Tokyo, our Cambridge-certified faculty maintains high academic standards, guiding students through structured coursework and innovative learning methodologies to ensure subject mastery and academic confidence.



## International Baccalaureate Diploma Programme (IBDP) - Grades 11 to 12

The IB Diploma Programme (IBDP) is a rigorous two-year curriculum for students aged 16-19 who have completed Grade 10, 'O' Levels, or an equivalent qualification. Recognised globally, it fosters critical thinking, intercultural understanding, and academic excellence. The programme consists of six subject groups and a core component that integrates research, practical application, and extracurricular engagement.

At GIIS Tokyo, the IBDP is designed to develop well-rounded individuals who are equipped for university and future career opportunities. With an inquiry-based approach, the curriculum promotes independent learning, leadership, and adaptability. Our experienced IB faculty provides personalised support, ensuring students achieve their highest potential in a structured yet flexible environment.

Students undertake subjects including English A Language & Literature, Japanese and Chinese Language A Literature, and additional courses through the Pamoja platform, offering the flexibility to customise their learning journey.

The IB Core—Theory of Knowledge (TOK), Extended Essay (EE), and Creativity, Activity, Service (CAS)—is central to the programme, encouraging critical thinking, research skills, and active community participation.

By choosing the IBDP at GIIS Tokyo, students benefit from a globally recognised curriculum that balances academic excellence with personal development, ensuring they are well-prepared for top universities and lifelong success.





## International Curriculum Overview at GIIS Tokyo

	Stage	Age Group	Curriculum	Assessment Criteria	Faculty	Key Activities
1	Primary Years	Grades 1-5	IB Primary Years Programme (IB PYP)	Inquiry-based learning, formative assessments, student-led project-based assessment	IB-certified educators	Collaborative projects, transdisciplinary learning, leadership building, language and numeracy skills
2	Middle Years	Grades 6-8	Cambridge Lower Secondary (CLSP)	Diagnostics, formative assessments, coursework, term-end tests, skill-based learning	Cambridge-certified faculty	STEM-based learning, real-world connections, creativity, and critical thinking
3	Secondary Years	Grades 9-10	Cambridge IGCSE	External Cambridge board exams, internal coursework, subject-specific learning	Subject-specialist educators	In-depth academic exploration, interdisciplinary group projects, research skills development
4	Senior Secondary Years	Grades 11-12	IB Diploma Programme (IBDP)	Theory of Knowledge (TOK), extended essay (EE), Creativity-Activity-Service (CAS), final exams	IB-trained faculty	Research methodology, extended writing, community engagement, global citizenship



# Indian Curriculum (CBSE)

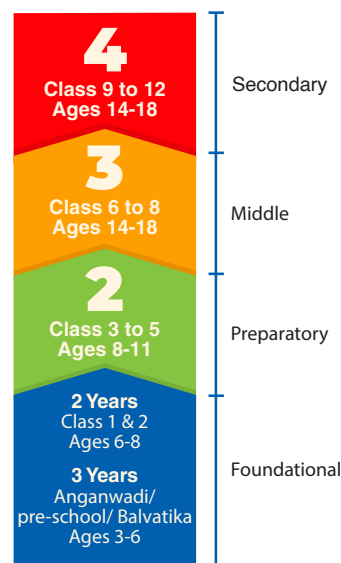
GIIS Tokyo has been a proud provider of the Central Board of Secondary Education (CBSE) curriculum since 2006, offering a comprehensive and structured academic framework from Grades 1 to 12. Recognised globally, the CBSE curriculum is equivalent to international standards, with guidelines clearly laid out in the CBSE Examination Bye-laws.

In line with India's National Education Policy (NEP 2020), the curriculum follows the 5+3+3+4 framework, covering ages 3 to 18, and ensuring a developmentally appropriate and progressive academic journey.

At GIIS Tokyo, the CBSE curriculum balances academic excellence with creativity, values, and global awareness. It encourages conceptual clarity, critical thinking, and real-world application through interactive learning. Students engage in a range of interdisciplinary experiences that foster communication, leadership, and analytical skills.

With structured progression and a strong emphasis on holistic education, CBSE at GIIS Tokyo equips students for university success and future career opportunities.

## New Pedagogical & Curricular Structure



## Indian Curriculum Overview at GIIS Tokyo

Stage	Age Group	Assessment Criteria	Faculty	Key Activities
1 Primary Years	Grades 1-5	Continuous and comprehensive evaluation; assessments are ongoing and formative	Holistic development-focused educators	Foundational literacy and numeracy, three-language acquisition, environmental studies, creative development, and arts integration.
2 Middle Years	Grades 6-8	Formative and periodic assessments, project work, and skill-based evaluation	CBSE-trained interdisciplinary faculty	Introduction to science and social studies, inquiry-based learning, STEAM projects, multilingual exposure, socio-environmental understanding, and classroom activities that enhance engagement and practical learning.
3 Secondary Years	Grades 9-10	Board assessments, subject enrichment, and practical learning	Subject specialists	Composite course structure with subjects continued from Grade 9. Includes Artificial Intelligence, coding, critical thinking, public speaking, art-integrated learning, and collaborative activities.
4 Senior Secondary Years	Grades 11-12	Board exams, internal assessments, and practical evaluations	Experienced board examiners and mentors	Students choose a minimum of five subjects including English. Options include Mathematics, Physics, Chemistry, Biology, Computer Science, Business Studies, Economics, Entrepreneurship, Psychology, and Physical Education. Emphasis on experiential learning, university readiness, leadership, entrepreneurship, and active participation.



## Key Highlights of the CBSE Curriculum at GIIS Tokyo

- Promotes holistic development—intellectual, physical, emotional, and social
- Encourages creativity and experiential learning over rote memorisation
- Focuses on competency-based learning with clear assessment goals
- Emphasises real-world application and problem-solving
- Upholds constitutional and value-based learning
- Integrates 21st-century skills including critical and creative thinking
- Adopts innovative pedagogy—experiential, toy-based, and art-integrated learning
- Supports inclusive education and caters to varied learning needs
- Utilises varied assessment formats to enhance learning outcomes
- Embeds environmental education across disciplines

At GIIS Tokyo, we achieve this through a structured yet flexible curriculum, hands-on projects, cross-disciplinary weeks, values-based initiatives, and consistent integration of modern teaching practices—ensuring our students are future-ready, confident, and globally aware.

## Beyond the Classroom

The CBSE Wing at GIIS, Tokyo, promotes a wide range of Subject Focused Activities designed to develop life skills and encourage holistic growth:

- **Stimulating Creativity and Fantasy** – Fosters communication, creative thinking, and collaboration
- **STEAM Activities** – Interdisciplinary projects combining science, technology, engineering, arts, and maths
- **Social Science Perspectives** – Builds civic awareness and critical understanding
- **Celebration of Multilingualism**– Celebrates multilingualism and cultural exchange

Students also benefit from signature programmes such as the **Leadership Lecture Series, School-level Spelling Bee, Tokyo Spelling Bee, International Day of Yoga, Student Exchange Programmes**, and various national and international events, which expose them to global perspectives and essential life skills, including adaptability, teamwork, and resilience.



# HOW GIIS TOKYO ENHANCES ACADEMIC SUCCESS FOR EVERY STUDENT

At GIIS Tokyo, we are committed to supporting every student in achieving their full academic potential. To ensure success, we offer programmes that provide personalised guidance and innovative learning opportunities. For students whose first language is not English, we provide comprehensive language support across all curricula.



## English Language Proficiency Programme (ELPP) Key Initiatives



Programme	Grade	Description
After-School English Support	KG & Primary	Strengthens foundational language skills through engaging, interactive learning activities.
<b>Enhanced</b> English Language Support (ELS)	Grade 1-5	Provides in-class assistance to reinforce language skills and support classroom learning.
<b>New!</b> Academic English Preparatory Programme (AEPP)	Grade 6-8 (CBSE, CLS, PYP)	Enhances academic English proficiency to facilitate seamless integration into mainstream education, with assessments determining transition from language support to regular English classes in AEPP.
English as a Second Language (ESL)	Grade 6-12 (International Curricula)	Ensures a seamless transition for students entering an English-speaking academic environment.





## STEAM Education

Our STEAM education programme integrates Science, Technology, Engineering, Arts, and Mathematics into the learning experience across all curricula. Students not only learn theoretical concepts but also apply them using STEAM kits and real-world problem-solving activities. This hands-on approach fosters innovation, critical thinking, and practical skills essential for future success.

By integrating ELPP and STEAM across all curricula, GIIS Tokyo ensures that students are equipped with the skills and confidence to thrive academically and prepare for global opportunities.

## Robotics at GIIS Tokyo: Building Future-Ready Skills from an Early Age

At GIIS Tokyo, Robotics is an integral part of the curriculum for Grades 1 to 5, offered through both the CBSE and IB PYP frameworks. Our primary students engage in hands-on robotics activities that introduce them to the fundamentals of engineering, coding, and design—while nurturing essential skills such as critical thinking, creativity, and problem-solving.

As part of our student exchange programme, students collaborate with peers from GSG campuses across the globe to build and programme LEGO models using specialised software. This unique cross-campus experience promotes teamwork, technical proficiency, and global collaboration, preparing students to thrive in an interconnected world.

At GIIS Tokyo, we believe that early exposure to robotics empowers students to become innovative, confident, and future-ready learners.



# THE 9GEMS™ FRAMEWORK AT GIIS TOKYO



The 9GEMS™ framework at GIIS Tokyo is designed to equip students with essential skills that go beyond academics, preparing them for a successful and meaningful future. It fosters innovation and creativity, encouraging students to think critically and approach challenges with confidence and originality. Leadership and entrepreneurial skills are developed through hands-on activities like the Entrepreneurship Bootcamp and school leadership roles, helping students build problem-solving abilities and decision-making confidence. Universal values and ethics instill empathy, respect, and a sense of responsibility, while green and community initiatives teach teamwork, sustainability, and social awareness. Through skill development programmes, students gain life skills, vocational expertise, and the ability to adapt to real-world challenges. The 9GEMS™ framework empowers students with a balanced set of academic, personal, and social skills, shaping them into well-rounded individuals ready to thrive in an ever-evolving global landscape.



# EXTRA-CURRICULAR AND CO-CURRICULAR ACTIVITIES (ECA & CCA) AT GIIS TOKYO



At GIIS Tokyo, Extra-Curricular Activities (ECAs) and Co-Curricular Activities (CCAs) are integral to fostering holistic development, shaping students into well-rounded individuals ready to thrive in a globalised world. From sports like cricket, table tennis, and badminton to creative arts such as music, needle art, and instrument play, students are encouraged to explore their passions. Activities also include performing arts, science club experiments, and leadership opportunities that hone critical thinking, teamwork, and social connections. Course enrichment activities such as quizzes, group projects, and short tests are embedded into daily learning.

To cultivate camaraderie and healthy competition, students are grouped into four Houses, instilling pride, teamwork, and a sense of belonging. Participation in at least one ECA and one CCA is mandatory, ensuring every student benefits from this comprehensive and enriching approach to education. This dynamic framework has positioned GIIS Tokyo as a leader among international schools.



# VALUE-ADDED PROGRAMMES AT GIIS TOKYO

---

At GIIS Tokyo, our value-added programmes go beyond the classroom to provide students with exceptional opportunities to grow academically, socially, and personally. These initiatives are designed to equip students with essential skills, foster a global mindset, and nurture leadership and innovation. Through an extensive range of activities and specialised programmes, students are encouraged to explore their passions, expand their horizons, engage with a global community, and solve real-world problems.

## GIIS Model United Nations (MUN)

Every year, GIIS Tokyo hosts the prestigious GIIS Model United Nations (MUN), where international students from around the world participate. This event helps students develop diplomatic, debating, and critical thinking skills as they engage in simulated global discussions. It has become one of GIIS Tokyo's most anticipated annual events, eagerly awaited by GIIS and non-GIIS students across Japan and beyond.



## Leadership Lecture Series (LLS)

The Leadership Lecture Series (LLS) brings influential leaders from various fields to inspire students with real-world insights and success stories. These interactions encourage students to dream big, learn from achievers, and find motivation to choose the right path in life.



## Global Platforms & Initiatives

At GIIS Tokyo, students actively participate in international events such as RWCC, GED Mock COP, and OECD forums—platforms that challenge them to address real-world issues through innovation, collaboration, and critical thinking. These experiences foster global awareness and empower students to engage meaningfully in environmental and policy discussions, preparing them to become responsible global citizens.

## Global Singing Stars Music Competition

A platform for talented musicians to showcase their skills and compete at an international level.

## Cricket Academy

Our specialised Cricket Academy nurtures athletic talent and prepares students for professional-level performance.

## Global Culture Centre Courses

A variety of after-school courses, including leadership, robotics, and arts, are available at nominal fees to provide students with additional learning opportunities.

## Student Exchange Programmes

Unique opportunities for cultural immersion and learning are offered through exchanges with local Japanese schools and international institutions.

These value-added programmes ensure that students at GIIS Tokyo receive a comprehensive, well-rounded education that prepares them to excel in all aspects of life.



## GIIS Tokyo's Book Week

Book Week at GIIS Tokyo is a unique initiative aimed at fostering a lifelong love for reading among students from a young age. Held every December, this week-long celebration features engaging activities such as "Drop Everything and Read," storytelling sessions for younger students led by faculty, and creative events like Book Character Day and Book Cover Design Day. The "Tsundoku" programme encourages students to write their own short stories, nurturing creativity and literacy. Each year, a renowned author interacts with students, inspiring them with insights into the world of writing and storytelling. With compulsory weekly library periods integrated into all curricula, GIIS Tokyo ensures that students develop a strong connection to reading and imagination throughout the year.

# UNIVERSITY FAIR

GIIS Tokyo hosts an annual University Fair, connecting students with prestigious institutions from Japan and abroad. This event provides a platform for students to interact with university representatives, gain insights into academic opportunities, and make informed decisions about their higher education pathways.

# CAREER COUNSELLING AND UNIVERSITY PLATFORMS

GIIS Tokyo offers a comprehensive career counselling programme starting from Grade 8, including one-to-one meetings with students and parents to provide personalised guidance on academic and career goals. From psychometric testing to tailored support with college applications, our counsellors ensure every student is on the right path. The programme also includes university fairs, online webinars with individual universities, and detailed sessions on subject selection and application processes. These initiatives empower students to make informed decisions, securing placements at top universities in Japan and globally, while reflecting GIIS Tokyo's focus on academic excellence and global readiness.

As a result of our personalised and robust career counselling programme, GIIS Tokyo students have secured admissions to numerous prestigious universities in Japan and across the globe. Our graduates have received offers from world-renowned institutions such as Waseda University, Sophia University, and the University of Tsukuba in Japan; University College London and King's College London in the UK; the University of Toronto in Canada; the University of Sydney in Australia; and Boston University and the University of California San Diego in the United States. These are just a few examples from an extensive list of esteemed universities worldwide.



# KEY CONTACTS

## Country Head, GIIS Tokyo

Mr. Sumit Mishra

Email: [sumit.mishra@globalschools.com](mailto:sumit.mishra@globalschools.com)

## Principal CBSE

Ms. Sunita Kashyap

Email: [principal2.giistyo@globalschools.com](mailto:principal2.giistyo@globalschools.com)

## CBSE (Secondary) Coordinator

Ms. Manjila Paul Banerji

Email: [manjila.banerji@globalschools.com](mailto:manjila.banerji@globalschools.com)

## CBSE (Upper Primary) Coordinator

Ms. Atima Lal

Email: [atima.lal@globalschools.com](mailto:atima.lal@globalschools.com)

## CBSE (Lower Primary) Coordinator

Ms. Monica Pradeep

Email: [monica.pradeep@globalschools.com](mailto:monica.pradeep@globalschools.com)

## Principal, International Curriculum

Ms. Prerna Mannan

Email: [principal1.giistyo@globalschools.com](mailto:principal1.giistyo@globalschools.com)

## IBDP Coordinator

Mr. Seth Howerton

Email: [seth.howerton@globalschools.com](mailto:seth.howerton@globalschools.com)

## Cambridge Coordinator

Mr. Thomas Marsilin

Email: [thomas.marsilin@globalschools.com](mailto:thomas.marsilin@globalschools.com)

## IBPYP Coordinator

Mr. Glen Royce

Email: [glen.royce@globalschools.com](mailto:glen.royce@globalschools.com)

## Career Counsellor

Dr. Md. Mukhlesur Rahman

Email: [mukhlesur.rahman@globalschools.com](mailto:mukhlesur.rahman@globalschools.com)

## For Admissions Enquiries:



[adm2.giistyo@globalschools.com](mailto:adm2.giistyo@globalschools.com)



**03-6631-0442**



**64**  
campuses



Singapore



Japan



United Kingdom



South Korea



Saudi Arabia



UAE



Malaysia



Philippines



Cambodia



India



Thailand

**11**  
countries

**45,000**  
students

**600+**  
International  
Awards

For further details, you can reach the school office at



+81 3 6631 0441



Or visit us at <https://globalindianschool.org/jp/tokyo/>