

Educating Young Minds in an AI Driven World

Global Schools Group blends AI innovation with human values, preparing students to think, question, and grow with purpose.



Learning Beyond the Classroom

Artificial Intelligence allows learning to extend far beyond physical classrooms. At **Global Schools Group**, students explore ideas through digital platforms, global interactions and real world applications.

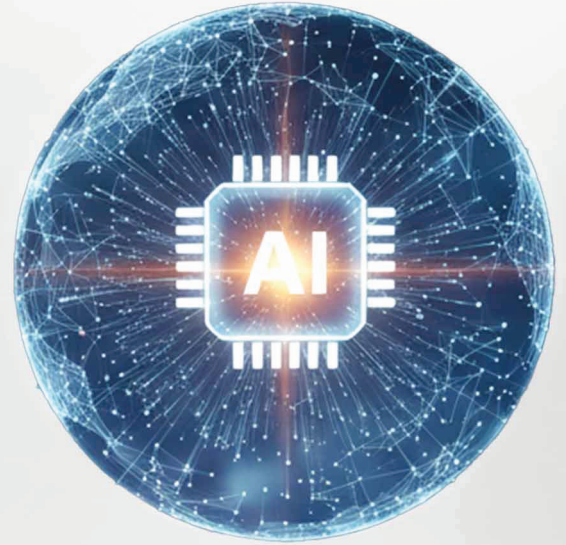


April 2026



MONDAY	TUESDAY	WEDNESDAY	THURSDAY	FRIDAY	SATURDAY	SUNDAY
		1	2 Orientation for New Parents Meet & Greet (Grade 1 onwards)	3 Good Friday Holiday	4	5
6 Commencement Of AY 2026-27 (Gr 6-9 & 11)	7 Commencement Of AY 2026-27 (Gr 3-5)	8 Commencement Of AY 2026-27 (GMP - Gr 2)	9	10 Career Workshop For Gr 8 th - 2 slots of 1 hour	11 NWD	12
13	14 Dr. Ambedkar Jayanti Holiday	15	16	17 Career Workshop For Gr 9 th and 10 th - 2 slots of 1 hour	18 ● CCUG Orientation for Gr 8 th to 12 th (Parents)	19
20	21	22 ● i-Care Earth Day (GMP - Gr 5)	23	24	25 Staff Development Day	26
27 Safety, Health & Hygiene Week (Gr 1 to 12)	28	29	30			

Holidays & Vacations	Pre-Primary (PP) Activities (Pre-Nursery - KG)	Primary Classes (PC) Activities (1-5)	Middle Classes (MC) Activities (6-8)	Higher Classes (HC) Activities (9-12)	Exams	Other Important Days & Activities
----------------------	--	---------------------------------------	--------------------------------------	---------------------------------------	-------	-----------------------------------



Personalised Learning Journeys

With the support of technology and dedicated educators, students receive guidance that recognises their individual strengths, interests and pace. Personalised learning ensures growth feels meaningful and empowering.

May 2026

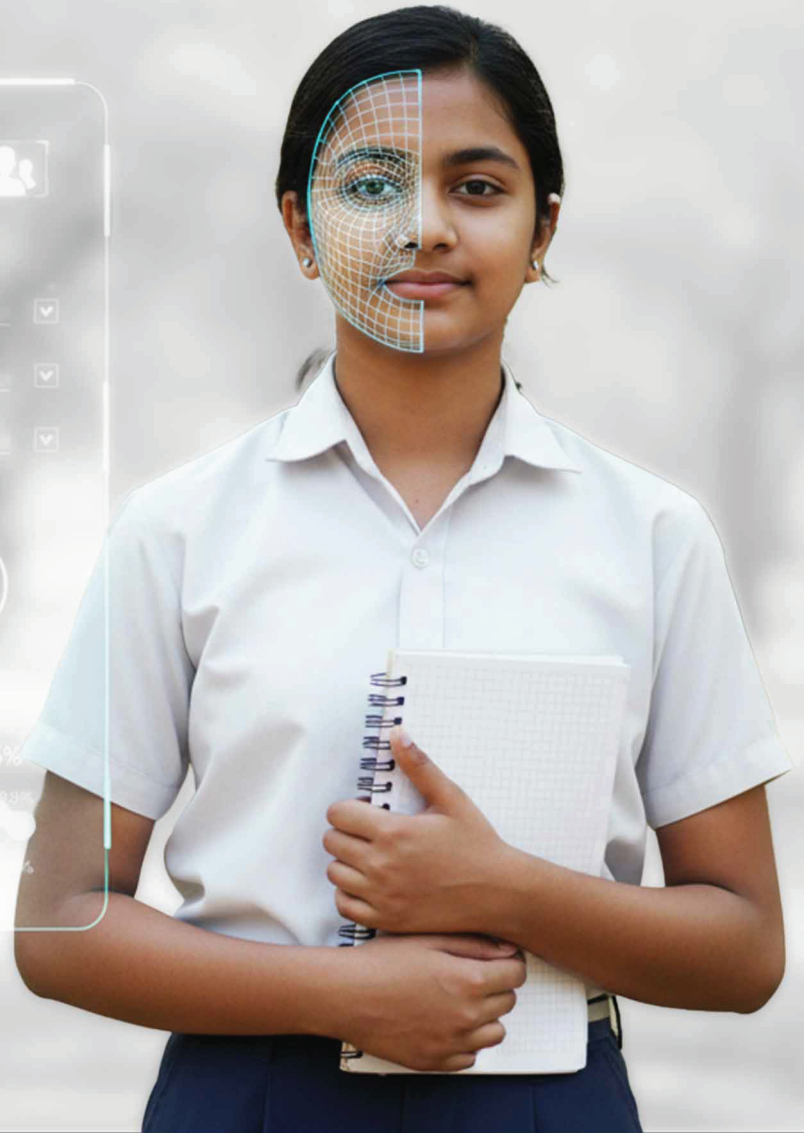


MONDAY	TUESDAY	WEDNESDAY	THURSDAY	FRIDAY	SATURDAY	SUNDAY
				1 Buddha Purnima Holiday	2 PTM (GMP, Gr 1 & 2)	3
4	5	6 University Fair - (Gr 9 to 12)	7 Mother's Day Celebration (Gr 1 & 2)	8 Mother's Day Celebration (GMP)	9 NWD	10
11	12 i-Care (GMP- Gr 2)	13 Pre Mid Term (Gr 10) CT-1 Gr 12	14 Pre-Mid Term (Gr 10) CT 1 Gr 12	15 Pre-Mid Term (Gr 10) CT 1 Gr 12	16 ● PTM (Gr 3 to 8) ● CCUG Orientation - Gr 8 (Parents)	17
18 ● Pre Mid Term (Gr 10) ● CT-1 Gr 12 ● Summer Vacation Begins for (GMP-Gr 8)	19 Pre Mid Term (Gr 10) CT 1 Gr 12	20 Pre Mid Term (Gr 10) CT 1 Gr 12	21	22	23 ● Staff Development Day ● PTM (Gr 9-12) ● CCUG Orientation - Gr 9 to 12 (Parents)	24
25	26	27 Bakrid Holiday	28	29 Summer Vacation Begins for Gr 9-12	30 Summer Vacation Begins for Teachers	31

Holidays & Vacations	Pre-Primary (PP) Activities (Pre-Nursery - KG)	Primary Classes (PC) Activities (1-5)	Middle Classes (MC) Activities (6-8)	Higher Classes (HC) Activities (9-12)	Exams	Other Important Days & Activities
---------------------------------	---	--	---	--	--------------	--

Critical Thinking in a Digital World

GSG encourages students to question, analyse and evaluate ideas thoughtfully. These skills help learners navigate complexity with clarity and confidence.



June 2026



MONDAY	TUESDAY	WEDNESDAY	THURSDAY	FRIDAY	SATURDAY	SUNDAY
1	2	3	4	5	6	7
8	9	10	11	12	13	14
15	16	17	18	19	20	21
22	23	24	25	26 Moharram Holiday	27	28
29	30 School Reopens for Teachers					

Holidays & Vacations	Pre-Primary (PP) Activities (Pre-Nursery - KG)	Primary Classes (PC) Activities (1-5)	Middle Classes (MC) Activities (6-8)	Higher Classes (HC) Activities (9-12)	Exams	Other Important Days & Activities
----------------------	--	---------------------------------------	--------------------------------------	---------------------------------------	-------	-----------------------------------

Creativity Powered by Technology



Where imagination meets innovation—students design, experiment, and express ideas through creative, hands on exploration.



July 2026



MONDAY	TUESDAY	WEDNESDAY	THURSDAY	FRIDAY	SATURDAY	SUNDAY
		1 School Reopens for (G3-12)	2 School Reopens for (GMP-Gr 2)	3	4	5
6	7 Career Workshop - Gr 8 th - 2 slots of 1 Hour Each	8 Career Workshop - Gr 9 th and 10 th - 2 slots of 1 Hour Each	9	10	11 NWD	12
13 PT1 for Gr 3-8/ PMT for Gr 9/ CT1 for Gr 11	14 PT1 for Gr 3-8/ PMT for Gr 9/ CT1 for Gr 11	15 PT1 for Gr 3-8/ PMT for Gr 9/ CT1 for Gr 11	16 PT1 for Gr 3-8/ PMT for Gr 9/ CT1 for Gr 11	17 PT1 for Gr 3-8/ PMT for Gr 9/ CT1 for Gr 11	18 PTM Pre-Primary	19
20 PT1 for Gr 3-8/ PMT for Gr 9/ CT1 for Gr 11	21 PT1 for Gr 3-8/ PMT for Gr 9/ CT1 for Gr 11	22	23 Special Assembly (GMP)	24 Clean Water/ Sanitation (SDG) (GMP)	25 ● Staff Development Day ● Career Fair (Gr 8-12)	26
27	28 ● Investiture Ceremony (Gr 7-12)	29	30 ● i-Care (GMP-Gr 2) ● Psychometric Assessment (Gr 8-10)	31 ● Psychometric Assessment (Gr 8-10)		

Holidays & Vacations	Pre-Primary (PP) Activities (Pre-Nursery - KG)	Primary Classes (PC) Activities (1-5)	Middle Classes (MC) Activities (6-8)	Higher Classes (HC) Activities (9-12)	Exams	Other Important Days & Activities
---------------------------------	---	--	---	--	--------------	--

Preparing for Future Careers

With many future careers still undefined, **GSG** focuses on adaptability and problem solving to prepare students for a changing professional world.



Communication



Adaptability



Problem-Solving



August 2026



MONDAY	TUESDAY	WEDNESDAY	THURSDAY	FRIDAY	SATURDAY	SUNDAY
31					1 PTM (Gr 3-8 and Gr 9 & 11)	2
3	4	5 Industry Innovation and Infrastructure SDG (GMP)	6	7	8 NWD	9
10 India Calling Week (GMP)	11	12 Entrepreneurship Fest	13 Entrepreneurship Fest	14	15 Independence Day Holiday	16
17 CT2 (Gr 12)	18 CT2 (Gr 12)	19 CT2 (Gr 12)	20 CT2 (Gr 12) Special Assembly (GMP)	21 CT2 (Gr 12)	22 PTM (Gr 1 & 2) Staff Development Day	23
24 CT2 (Gr 12)	25	26 Eid - e- Milad Holiday	27 i-Care (GMP- Gr 2) Raksha Bandhan Celebration (GMP)	28 Raksha Bandhan Holiday	29	30

Holidays & Vacations	Pre-Primary (PP) Activities (Pre-Nursery - KG)	Primary Classes (PC) Activities (1-5)	Middle Classes (MC) Activities (6-8)	Higher Classes (HC) Activities (9-12)	Exams	Other Important Days & Activities
----------------------	--	---------------------------------------	--------------------------------------	---------------------------------------	-------	-----------------------------------

Global Citizenship

Technology connects people across cultures and continents. Education at **GSG** nurtures respect, empathy and global awareness, helping students understand their role in a shared world.



September 2026



MONDAY	TUESDAY	WEDNESDAY	THURSDAY	FRIDAY	SATURDAY	SUNDAY
	1	2	3 Janmashtami Celebration (GMP)	4 Janmashtami Holiday	5	6
7 Hindi Week (Gr 1 to 10)	8 Career Workshop - Gr 8 th - 2 Slots of 1 Hour Each	9 Career Workshop Gr 9 th and 10 th - 2 slots of 1 Hour Each	10 Grandparents Day Celebration (GMP) Special Assembly (GMP)	11 Grandparents Day Celebration (Gr 1 & 2)	12 NWD	13
14 Book Week (GMP)	15	16 Half Yearly (Gr 3-8) Mid Term Exam (Gr 9, 10, 12) CT 2 Gr 11	17 CT2 (Gr 11)	18 Half Yearly (Gr 3-8) Mid Term Exam (Gr 9, 10, 11) CT 2 (Gr 11)	19	20
21 Half Yearly (Gr 3-8) Mid Term Exam (Gr 9, 10 and 12) CT 2 (Gr 11)	22 CT2 (Gr 11)	23 Half Yearly (Gr 3-8) Mid Term Exam (Gr 9, 10 and 12) CT 2 (Gr 11)	24 No Poverty and Zero Hunger SDG (GMP)	25 Half Yearly (Gr 3-8) Mid Term Exam (Gr 9-12)	26 Staff Development Day	27
28 Half Yearly (Gr 3-8) Mid Term Exam (Gr 9, 10 and 12)	29 ● i-Care (GMP- Gr 2)	30 Half Yearly (Gr 3-8) Mid Term Exam (Gr 9, 10 & 12)				

Holidays & Vacations	Pre-Primary (PP) Activities (Pre-Nursery - KG)	Primary Classes (PC) Activities (1-5)	Middle Classes (MC) Activities (6-8)	Higher Classes (HC) Activities (9-12)	Exams	Other Important Days & Activities
---------------------------------	---	--	---	--	--------------	--

Collaboration in the Age of AI

Future success depends on working together. Through collaborative learning experiences, students develop communication skills, teamwork and mutual respect.



October 2026



MONDAY	TUESDAY	WEDNESDAY	THURSDAY	FRIDAY	SATURDAY	SUNDAY
			1 Mahatma Gandhi Jayanti Celebration	2 Gandhi Jayanti Holiday	3 PTM (GMP & Gr 1-2)	4
5 Art and Craft Week (GMP)	6	7	8	9	10 NWD	11
12	13	14	15 Special Assembly (GMP)	16 Dussehra Celebration GMP	17 PTM (Gr 3 to 12)	18
19 Dussehra Break	20 Dussehra Break	21	22 Climate Action SDG (GMP)	23 ● i-Care (GMP-Gr 2)	24 Staff Development Day Career Fair	25
26	27	28	29	30 Annual Day	31 Annual Day	

Holidays & Vacations	Pre-Primary (PP) Activities (Pre-Nursery - KG)	Primary Classes (PC) Activities (1-5)	Middle Classes (MC) Activities (6-8)	Higher Classes (HC) Activities (9-12)	Exams	Other Important Days & Activities
---------------------------------	---	--	---	--	--------------	--

Innovation with Responsibility

Progress carries responsibility. Students learn that ethical thinking and accountability must guide innovation. At **GSG**, technology is used with care, purpose and respect for humanity.



November 2026



MONDAY	TUESDAY	WEDNESDAY	THURSDAY	FRIDAY	SATURDAY	SUNDAY
30 PB 1 (Gr -10 & Gr-12) Post Midterm(Gr-9) Half Yearly (G-11)						1
2 Montessori Week (GMP)	3 University Visit (Gr 11-12)	4	5	6 Diwali Celebration (GMP)	7 Diwali Break For Teachers and Students	8
9 Diwali Break	10 Diwali Break	11 Diwali Break	12 School Resumes for Students and Teachers	13 Children's Day Celebration (GMP-Gr 12)	14 NWD	15
16 ● Library Week ● PB1 for (G10 & Gr-12) ● Post Midterm (Gr-9) Half Yearly (Gr-11)	17	18 PB 1 (Gr-10 & Gr-12) Post Midterm (Gr-9) Half Yearly (G-11)	19 Special Assembly (GMP)	20 PB 1 (Gr-10 & Gr-12) Post Midterm (Gr-9) Half Yearly (G-11)	21	22
23 PB 1 (Gr-10 & Gr-12) Post Midterm (Gr-9) Half Yearly (G-11)	24 Guru Nanak Jayanti Holiday	25 PB 1 (Gr-10 & Gr-12) Post Midterm (Gr-9) Half Yearly (G-11)	26	27 PB 1 (Gr-10 & Gr-12) Post Midterm (Gr-9) Half Yearly (G-11)	28 Staff Development Day	29

Holidays & Vacations	Pre-Primary (PP) Activities (Pre-Nursery - KG)	Primary Classes (PC) Activities (1-5)	Middle Classes (MC) Activities (6-8)	Higher Classes (HC) Activities (9-12)	Exams	Other Important Days & Activities
---------------------------------	---	--	---	--	--------------	--

Leadership for Tomorrow

Leadership today is defined by empathy, adaptability and vision. Students are encouraged to take initiative, inspire others and lead with integrity in a changing world.

December 2026



MONDAY	TUESDAY	WEDNESDAY	THURSDAY	FRIDAY	SATURDAY	SUNDAY
	1	2 University Visit (Gr 11 & 12)	3 PT2 (Gr 3-8)	4 PT2 (Gr 3-8)	5 PTM (GMP, Gr 1 & 2)	6
7 ● PT2 (Gr 3-8) ● Exploration Week (GMP)	8 PT2 (Gr 3-8)	9 PT2 (Gr 3-8)	10 PT2 (Gr 3-8)	11 ● PT2 (Gr 3-8) ● PTM (Gr 9-12)	12 NWD	13
14	15	16 PTM (Gr 3 to 8)	17 Reduce waste and Fundamental Rights SDG (GMP)	18	19 Sports Day	20 Sports Day
21 ● i-Care (GMP- Gr 2)	22 Mock Practicals (Gr 12)	23 ● Mock Practicals (Gr 12) ● Christmas Celebration (GMP)	24 Winter Carnival	25 Christmas Holiday	26 Staff Development Day	27
28 ● Mock Practicals (Gr 12) ● Winter Vacation Starts (PP)	29 Mock Practicals (Gr 12)	30 Winter Vacation Starts (Gr 1-12) For Students and Teachers	31			

Holidays & Vacations	Pre-Primary (PP) Activities (Pre-Nursery - KG)	Primary Classes (PC) Activities (1-5)	Middle Classes (MC) Activities (6-8)	Higher Classes (HC) Activities (9-12)	Exams	Other Important Days & Activities
----------------------	---	---------------------------------------	--------------------------------------	---------------------------------------	-------	-----------------------------------

Wellbeing in a Digital Era

Balance is essential for sustained growth. Alongside academic and technological development, **GSG** places importance on mental, emotional and physical wellbeing, helping students build resilience and self awareness.



January 2027



MONDAY	TUESDAY	WEDNESDAY	THURSDAY	FRIDAY	SATURDAY	SUNDAY
				1	2	3
4	5	6	7 School Resumes For Teachers	8	9 NWD	10
11 School Resumes For Students (GMP - Gr 12)	12	13 PB-2 (Gr 10 & 12) CT3 (Gr 11)	14 CT3 (Gr 11)	15 CT3 (Gr 11) PB-2 (Gr 10 & 12)	16	17
18 ● PB-2 (Gr 10 & 12) ● CT3 Gr 11 ● Music and Movement Week (GMP)	19 CT3 (Gr 11)	20 PB2 (Gr 10 & 12) CT3 (Gr 11)	21 Life Below Water and Life on Land SDG (GMP)	22 ● PB2 (Gr 10 & 12)	23 Staff Development Program	24
25	26 Republic Day	27 ● i-Care (GMP-G2)	28	29	30	31

Holidays & Vacations	Pre-Primary (PP) Activities (Pre-Nursery - KG)	Primary Classes (PC) Activities (1-5)	Middle Classes (MC) Activities (6-8)	Higher Classes (HC) Activities (9-12)	Exams	Other Important Days & Activities
----------------------	--	---------------------------------------	--------------------------------------	---------------------------------------	-------	-----------------------------------



Lifelong Learning

Learning does not end with school. Curiosity, openness and adaptability form the foundation of lifelong growth. Students are encouraged to remain learners long after formal education.

February 2027



MONDAY	TUESDAY	WEDNESDAY	THURSDAY	FRIDAY	SATURDAY	SUNDAY
1 Community Helpers Week (GMP)	2	3	4	5	6	7
8	9	10	11 Basant Panchmi Celebration (GMP)	12 Annual Examinations (Gr 9 and 11)	13	14
15 Annual Examinations (Gr 9 and 11)	16	17 Annual Examinations (Gr 9 and 11)	18 Gender Equality and Reduce Inequalities SDG(GMP)	19 Annual Examinations (Gr 9 and 11)	20 PTM (GMP, Gr 1-2)	21 Maha Shivratri Holiday
22 Annual Examinations (Gr 9 and Gr 11)	23	24 Annual Examinations (Gr 9 and Gr 11)	25	26 i-Care (GMP - Gr 2)	27	28

Holidays & Vacations	Pre-Primary (PP) Activities (Pre-Nursery - KG)	Primary Classes (PC) Activities (1-5)	Middle Classes (MC) Activities (6-8)	Higher Classes (HC) Activities (9-12)	Exams	Other Important Days & Activities
---------------------------------	---	--	---	--	--------------	--

Values that Endure

While technology evolves, values remain constant. Respect, compassion and integrity continue to guide learning at **GSG**, shaping individuals who contribute positively to society.



March 2027



MONDAY	TUESDAY	WEDNESDAY	THURSDAY	FRIDAY	SATURDAY	SUNDAY
1 Annual Examination (Gr 3-8)	2	3 Annual Examination (Gr 3-8)	4	5 Final Exam Result Declaration (Gr 9 & 11) Annual Examination (Gr 3-8)	6 Maha Shivaratri Holiday	7
8 ● Commencement of New Session (Gr 10 & 12) ● Annual Examination (Gr 3-8)	9	10	11 Annual Examination (Gr 3-8)	12	13	14
15 Annual Examination (Gr 3-8)	16	17 Annual Examination (Gr 3-8)	18 ● Holi Celebration (GMP) ● Graduation Day (PP) ● PTM (PP)	19	20	21
22 Holi Holiday	23	24	25 Orientation (GMP)	26 Good Friday Holiday	27 PTM (Gr 1-8)	28
29	30	31				

Holidays & Vacations	Pre-Primary (PP) Activities (Pre-Nursery - KG)	Primary Classes (PC) Activities (1-5)	Middle Classes (MC) Activities (6-8)	Higher Classes (HC) Activities (9-12)	Exams	Other Important Days & Activities
---------------------------------	---	--	---	--	--------------	--

GIIS India Campuses

Noida | Bengaluru | Pune | Ahmedabad | Nagpur

www.globalindianschool.org/noida/

64

Campuses

11

Countries

45,000+

Students

5,000+

Educators

650+

International Awards

